



דין וחשבון בדיקה מס' 9712310415  
בהתאם לסעיף 12 לחוק התקנים תשי"ג 1953

פרטי ההזמנה:

שם המזמין: צובה ויז'ן מערכות תאורה חסכוניות אגש"ח בע"מ  
כתובת: צובה 9087000 טל. 02-9967001  
תאריך הזמנה: 06.04.17  
הדוגמה ניטלה ע"י בא כח: המזמין.

בדיקה של :

עקום פוטומטרי לגוף תאורה לד, אשר סופק ע"י המזמין .  
דגם: LDLS1120 D-10 יצרן: צובה ויז'ן ארץ ייצור: ישראל

מהות הבדיקה:

בדיקות פוטומטריות לפי תקן LM 79 סעיפים : 10,11 .

סיכום:

1. כללי

לפי בקשת המזמין, נערכה בדיקת עקום פוטומטרי , לגוף תאורה לד  
שתיאורו נתון בסעיף 2 של דוח זה.

תוצאות הבדיקה המפורטות בסעיף 3 של דוח זה, מתייחסות לגוף התאורה שנבדק  
בלבד, למועד שבו נערכה הבדיקה.  
הבדיקה בוצעה בעזרת הציוד שתיאורו נתון בסעיף 4 של דוח זה.

מסמך זה אינו היתר  
תו תקן

תוצאות הבדיקה  
במסמך זה מתייחסות  
רק לפריט שנבדק .

מסמך זה מכיל 13 דפים ואין  
להשתמש בו אלא במלואו

תאריך הדפסת המסמך: 19.4.2017

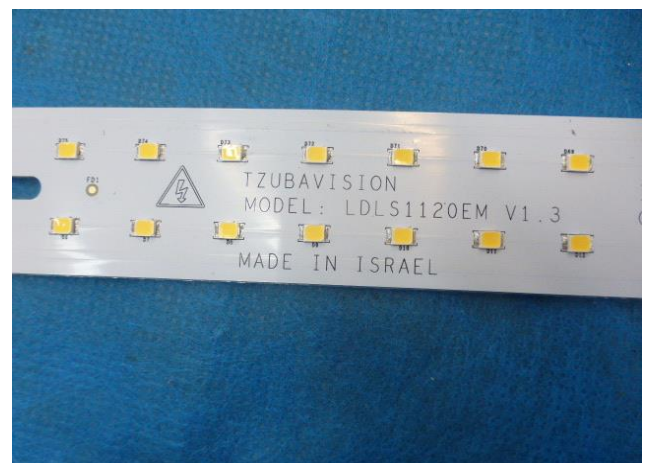
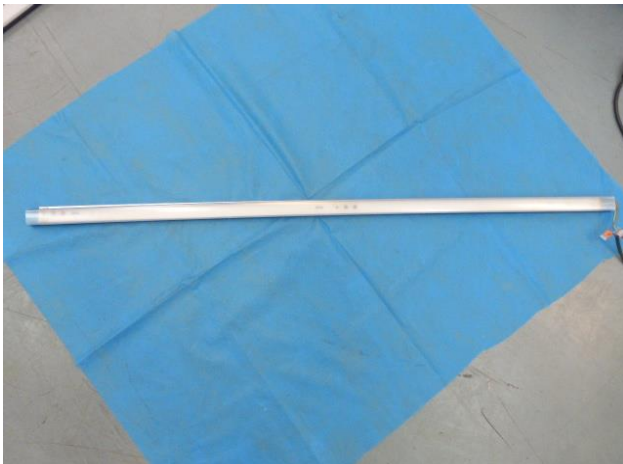
שם החותם: חבה משה  
תפקידו: מ"מ ראש ענף ציוד משרדי  
תאריך: 19.4.2017

שם החותם: גיא מורד  
תפקידו: טכנאי בכיר  
תאריך: 19.4.2017

עמוד 1 מתוך 13

דין וחשבון בדיקה מס' 9712310415  
בהתאם לסעיף 12 לחוק התקנים תשי"ג 1953

2. תיאור גוף התאורה:



עמוד 2 מתוך 13

דין וחשבון בדיקה מס' 9712310415  
 בהתאם לסעיף 12 לחוק התקנים תשי"ג 1953

3. תוצאות בדיקה:

Photometric Measurements

Total Luminous Flux (lm)	Electrical Power (W)	Luminous Efficacy (lm/W)	Test Distance (m)
3224.14	35.44	90.96	8.62

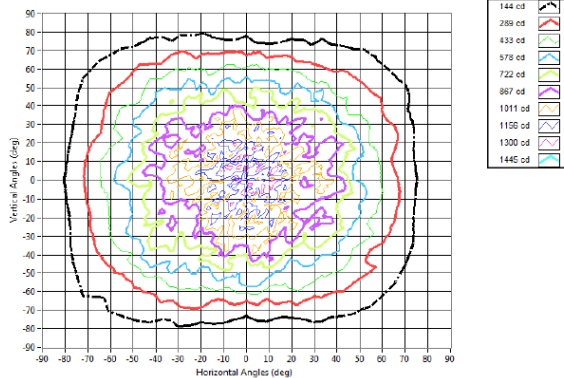
Electrical Measurements

Power Factor	Power (W)	Voltage (V)	Current (A)	Apparent Power (VA)	Frequency (Hz)	Current THD (%)
0.91	35.44	230.00	0.17	39.10	50.00	42.60

Luminaire Dimensions

Sample Diameter/Length (mm)	Sample Width (mm)	Sample Height/Depth (mm)	Luminous Diameter/Length (mm)	Luminous Width (mm)	Luminous Height/Depth (mm)	Luminous C0-plane (mm)	Luminous C90-plane (mm)	Luminous C180-plane (mm)	Luminous C270-plane (mm)
1150.00	35.00	20.00	1150.00	30.00	15.00	15.00	15.00	15.00	15.00

Isocandela Contour Plot

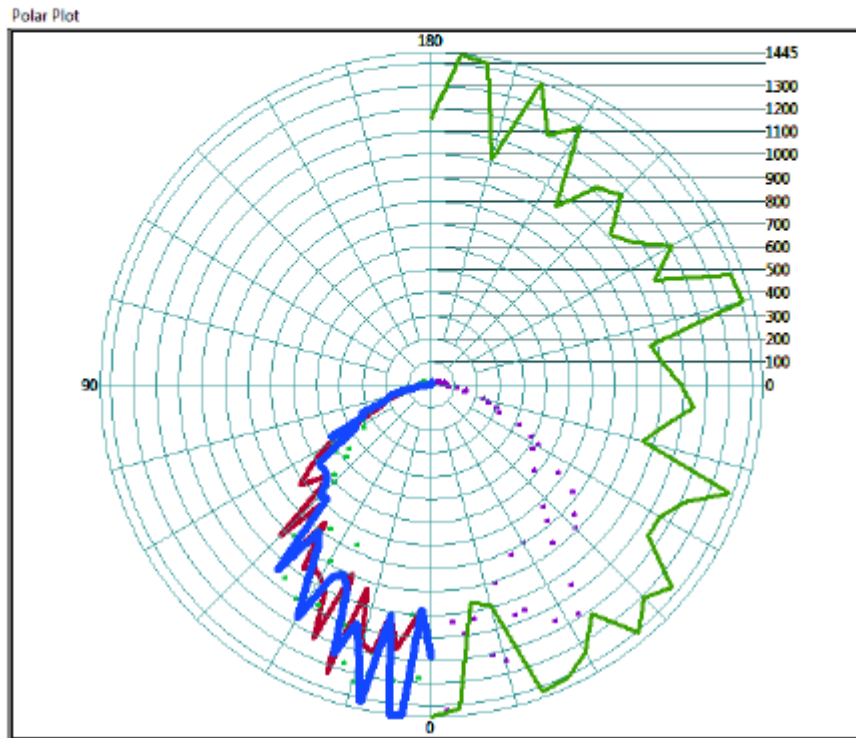


Minimum Intensity (cd)	Maximum Intensity (cd)
3.80	1444.71

עמוד 3 מתוך 13

דין וחשבון בדיקה מס' 9712310415  
 בהתאם לסעיף 12 לחוק התקנים תשי"ג 1953

Polar Plot (cd)



עמוד 4 מתוך 13





**דין וחשבון בדיקה מס' 9712310415**  
 בהתאם לסעיף 12 לחוק התקנים תשי"ג 1953

Candela Table (cd)

	0.0	5.0	10.0	15.0	20.0	25.0	30.0	35.0	40.0	45.0	50.0	55.0	60.0	65.0	70.0	75.0
0.0	1182.8	1182.8	1182.8	1182.8	1182.8	1182.8	1182.8	1182.8	1182.8	1182.8	1182.8	1182.8	1182.8	1182.8	1182.8	1182.8
2.5	977.1	1130.2	1339.0	1412.5	1214.6	1282.6	951.1	1385.7	1008.4	1219.7	1109.8	1287.1	992.0	1344.3	1040.6	944.4
5.0	1444.2	1353.4	1094.2	1262.5	955.1	1393.4	1276.6	990.2	988.7	948.0	1198.7	973.7	983.5	1173.3	1345.8	1366.2
7.5	1444.8	1414.1	961.7	987.5	1418.2	1405.1	1344.2	1214.2	1408.2	1313.5	1367.3	1151.8	1148.9	1215.0	1383.9	955.3
10.0	1015.4	1139.1	1161.4	1161.3	1157.9	1104.0	1018.6	1284.5	938.0	1399.1	1359.2	1385.9	1346.2	1020.8	1319.7	1074.5
12.5	1416.0	1024.7	1336.5	1398.8	1376.6	1383.2	1072.7	1360.5	1081.0	933.6	1343.3	1362.8	933.5	931.9	1204.0	1065.1
15.0	1216.8	1312.4	1258.8	1120.9	926.6	994.4	931.2	1061.6	1261.0	1250.5	1064.0	1140.8	1343.0	1372.0	1245.5	1304.4
17.5	1085.4	1202.4	941.5	1349.8	1139.5	1256.9	953.9	1151.4	1265.2	926.2	908.6	1203.7	917.4	889.4	971.2	1277.1
20.0	1244.6	953.5	1335.6	1346.5	1238.9	1272.2	914.4	1146.4	1098.3	1158.5	1265.6	1132.3	993.1	1227.6	841.0	1240.0
22.5	960.5	1222.2	1061.0	1057.1	1285.3	1217.7	1314.7	1141.7	876.6	1013.6	1169.2	1195.9	826.4	810.2	1185.8	1057.3
25.0	906.5	869.3	939.9	1052.3	966.3	1085.3	970.3	1062.2	1012.5	837.7	795.4	780.5	827.3	925.5	811.2	963.9
27.5	944.2	1255.4	1180.4	1235.5	1109.1	965.1	1109.1	1218.2	968.6	914.9	838.8	990.3	755.7	998.4	1066.3	955.6
30.0	1168.3	1194.0	821.1	1209.7	1229.3	926.2	805.5	1018.2	1098.8	844.2	959.6	1113.8	769.2	941.7	948.0	1038.1
32.5	997.6	1184.3	937.0	804.2	824.2	937.9	848.2	746.2	830.2	726.8	1088.4	767.7	1100.8	910.9	1050.6	1050.0
35.0	867.1	1073.7	1071.0	1039.9	1033.3	1057.9	721.5	1037.7	752.8	728.3	1049.5	876.7	1091.8	944.5	1143.5	883.0
37.5	806.2	1054.3	1062.8	746.9	1085.1	1012.5	704.3	725.4	1004.2	835.2	968.2	871.4	753.0	772.7	1081.2	741.7
40.0	1045.7	857.5	970.5	704.5	678.7	843.3	683.1	922.0	650.9	690.1	1026.3	1051.0	710.2	775.3	1015.4	717.7
42.5	672.2	665.0	777.2	845.9	904.9	600.4	892.6	851.7	949.2	878.4	925.5	1007.0	713.1	1005.5	934.6	676.0
45.0	686.6	805.5	655.9	898.6	711.2	759.1	615.6	888.7	618.8	876.2	877.8	917.0	736.1	712.7	963.5	832.2
47.5	612.7	675.4	712.1	802.8	554.0	537.6	815.8	827.1	591.5	598.4	669.0	876.8	741.2	653.1	664.6	720.2
50.0	597.3	653.1	787.1	683.1	503.2	744.0	539.4	752.2	669.2	754.7	568.6	686.1	584.2	806.3	862.2	631.3
52.5	591.2	556.2	493.4	552.5	459.5	701.0	589.8	717.8	627.7	770.7	794.7	548.2	613.6	546.9	527.8	528.0
55.0	600.8	501.9	628.5	568.7	479.4	611.1	555.0	481.5	581.2	705.0	519.1	719.3	628.0	636.9	695.5	691.5
57.5	469.8	421.8	404.2	405.6	422.2	549.3	596.9	613.0	464.3	621.1	618.8	463.6	538.7	469.1	424.2	417.7
60.0	378.6	424.1	533.6	345.9	534.6	468.5	556.9	464.8	593.8	549.8	572.1	465.9	400.6	438.9	543.1	472.9
62.5	492.2	435.3	451.4	436.9	346.4	489.1	512.3	413.4	454.2	437.4	501.1	338.1	496.5	458.1	480.4	425.7
65.0	322.1	392.4	395.4	370.9	433.5	399.6	461.5	466.9	335.8	394.9	448.6	393.5	301.4	398.7	432.2	312.6
67.5	327.2	274.6	311.6	273.6	273.9	268.8	390.2	403.6	351.5	303.8	392.5	398.8	391.7	388.4	400.8	275.4
70.0	212.4	297.3	238.7	204.5	257.5	329.1	307.0	328.7	242.4	351.5	252.0	354.7	248.1	327.7	348.4	240.0
72.5	195.6	161.3	225.5	192.8	271.5	189.9	235.3	267.3	276.8	212.9	271.6	267.9	204.6	199.9	234.2	198.2
75.0	188.5	154.5	154.2	171.7	219.9	184.7	223.1	209.4	222.7	253.0	212.7	250.9	170.0	251.0	166.9	170.4
77.5	137.5	144.6	151.7	123.4	158.8	188.2	172.4	140.8	191.2	153.2	201.0	141.2	159.3	137.5	201.7	136.2
80.0	69.7	93.0	88.8	130.2	97.0	151.3	154.1	139.9	142.9	160.4	113.2	165.7	125.4	159.9	109.7	127.3
82.5	50.3	54.2	84.3	66.1	81.3	94.7	97.3	124.2	109.0	129.9	130.9	91.5	96.9	106.2	131.0	130.3
85.0	33.5	47.2	42.9	65.3	65.1	63.3	64.9	66.5	77.5	98.5	98.2	96.8	79.3	74.5	74.0	86.9
87.5	16.9	23.1	32.9	30.2	54.5	43.3	52.5	74.6	62.0	82.6	59.5	59.4	79.7	60.9	65.3	84.4
90.0	3.8	10.1	19.9	25.3	33.1	36.3	42.2	49.0	50.9	60.5	50.4	63.4	51.9	59.6	58.8	59.7
92.5	3.1	5.9	13.5	23.9	22.7	28.5	34.1	50.0	54.6	43.0	42.8	48.1	66.0	54.5	61.0	64.0
95.0	2.6	2.3	10.6	20.8	30.3	37.2	31.6	48.2	38.8	47.8	39.9	46.0	49.5	49.4	60.5	53.7
97.5	3.6	2.2	3.4	13.2	20.7	23.4	33.0	41.9	44.8	51.1	36.4	45.4	47.5	48.0	55.0	55.0
100.0	3.2	2.0	2.6	4.8	16.0	27.7	33.3	37.0	32.0	34.3	50.3	50.2	43.4	43.7	53.8	52.2
102.5	3.0	2.0	2.1	2.6	5.7	11.5	19.3	34.1	31.0	41.9	33.0	48.3	51.6	43.0	35.2	38.9
105.0	2.1	1.7	2.3	1.7	1.9	5.7	14.2	25.5	32.7	27.0	44.2	46.0	45.6	37.3	45.1	35.2
107.5	1.3	1.5	1.4	1.9	1.6	1.6	4.9	14.5	23.5	32.4	34.8	27.8	43.8	41.4	35.0	32.1
110.0	1.2	1.2	1.5	1.2	1.2	1.6	1.9	4.1	12.3	20.4	19.7	32.9	36.4	39.5	34.2	42.8
112.5	1.5	1.7	1.8	1.7	1.7	1.4	1.4	1.8	3.8	11.3	15.8	15.9	20.0	32.2	24.0	25.1
115.0	1.3	1.8	1.3	1.6	1.8	1.4	1.2	1.3	1.8	4.1	7.4	12.7	18.0	19.5	24.0	26.7
117.5	1.9	1.3	1.5	1.7	1.3	1.5	1.2	1.3	1.8	1.8	1.9	4.5	7.6	9.3	13.3	11.7
120.0	1.5	2.0	1.4	1.3	1.8	1.8	1.2	1.2	1.6	1.7	1.3	1.7	3.3	5.2	5.5	9.0
122.5	2.1	1.4	1.8	2.0	1.5	1.9	1.3	1.5	1.4	1.8	1.3	1.5	1.2	1.3	1.6	3.4
125.0	1.5	1.7	1.9	1.9	1.8	1.4	1.8	1.9	1.9	1.7	1.5	1.7	1.2	1.4	1.5	1.4
127.5	1.9	2.0	2.0	1.9	1.5	1.7	1.5	1.9	1.6	1.3	1.3	1.8	1.3	1.7	1.2	1.2
130.0	2.1	1.7	2.0	1.8	1.9	2.1	1.6	2.0	1.8	2.0	2.0	1.9	1.5	1.3	1.3	1.2
132.5	2.0	2.1	2.4	1.6	2.3	2.0	2.3	1.7	2.2	1.5	1.8	2.1	1.8	1.4	1.9	1.3

עמוד 5 מתוך 13



**דין וחשבון בדיקה מס' 9712310415**  
בהתאם לסעיף 12 לחוק התקנים תשי"ג 1953

Candela Table (cd)

	80.0	85.0	90.0	95.0	100.0	105.0	110.0	115.0	120.0	125.0	130.0	135.0	140.0	145.0	150.0	155.0
0.0	1182.8	1182.8	1182.8	1182.8	1182.8	1182.8	1182.8	1182.8	1182.8	1182.8	1182.8	1182.8	1182.8	1182.8	1182.8	1182.8
2.5	1106.5	946.8	1415.3	952.1	1045.2	953.6	1173.4	1111.6	1145.8	1419.1	961.0	958.2	1360.8	1074.4	1082.2	961.3
5.0	1391.2	1229.8	1036.1	1345.6	1413.6	991.7	1414.8	958.3	951.0	1399.3	1012.7	1421.3	1186.9	1358.9	1090.9	1154.1
7.5	1031.8	1147.3	1091.7	1015.4	971.5	1403.5	1391.4	1075.0	1213.2	1078.1	1016.8	1173.5	1115.7	948.0	1288.4	1195.7
10.0	1154.2	1163.9	1032.4	956.5	1407.4	940.3	1150.7	1145.8	980.1	1229.9	971.9	1018.1	1340.2	1166.6	1221.4	1399.3
12.5	1074.0	1263.6	1206.9	975.6	935.8	1160.5	954.2	1076.2	1377.0	1389.5	955.9	958.6	1196.7	1194.4	1354.1	1271.5
15.0	1201.1	1211.7	1243.3	919.8	1271.0	1171.4	1253.0	1006.3	931.0	984.6	1313.0	994.6	1119.8	1038.7	1369.2	1265.0
17.5	1228.8	1286.3	907.0	1174.7	893.6	1176.5	1324.0	895.5	1002.4	1310.5	1293.6	920.0	1075.7	1077.5	1052.4	1217.0
20.0	1211.7	829.8	1063.8	1225.5	969.1	937.2	975.6	1267.7	873.8	924.3	903.7	1076.5	953.3	1181.0	1024.8	1127.3
22.5	1168.2	1166.8	1057.6	1055.2	1092.4	1047.5	896.1	1085.8	841.0	1236.5	1265.2	1210.6	1089.8	1303.1	1112.6	1246.0
25.0	1142.4	1032.7	816.9	869.1	1121.4	1137.2	868.0	1120.4	783.4	848.5	820.3	874.5	1176.2	1273.4	876.4	1204.9
27.5	814.9	1147.9	1156.4	853.4	1145.7	1043.9	920.7	777.2	799.0	782.9	1138.0	1090.1	855.4	1194.3	1257.3	913.6
30.0	1110.5	1138.8	792.8	1142.4	783.9	930.9	824.3	1113.3	811.6	746.0	806.8	801.3	1126.0	1144.2	821.6	1227.8
32.5	896.6	1033.9	1184.5	818.4	985.5	799.5	764.4	760.1	883.0	749.4	822.4	804.7	730.3	802.4	821.9	789.3
35.0	1153.9	851.4	1060.7	1163.5	1120.4	1136.1	762.0	765.8	796.8	822.9	711.6	995.2	1021.6	752.9	836.3	1024.9
37.5	747.3	957.9	865.5	884.1	773.6	913.0	748.5	761.0	1048.5	834.3	802.1	839.8	710.7	719.5	783.7	708.3
40.0	1055.4	739.2	779.4	734.5	962.2	712.1	929.3	747.3	829.7	871.2	686.1	683.7	886.3	942.0	714.9	683.4
42.5	884.9	1017.7	719.0	718.8	846.8	1011.1	985.4	672.9	672.5	999.2	665.8	655.0	670.9	624.6	695.7	645.4
45.0	721.0	655.6	885.2	653.5	759.9	699.0	754.8	721.7	927.8	651.3	762.0	633.3	639.0	841.9	751.3	718.2
47.5	649.6	777.3	837.6	682.3	691.3	653.2	821.1	692.8	886.7	897.8	888.5	663.1	598.7	562.1	748.9	770.8
50.0	591.6	720.5	576.7	596.8	610.1	607.4	692.2	638.7	774.6	613.4	626.7	809.6	644.8	669.3	703.7	491.7
52.5	527.4	653.1	767.8	605.8	517.5	584.5	663.7	790.1	775.3	739.7	695.9	518.0	550.8	535.0	650.3	546.2
55.0	473.6	613.3	669.2	463.8	510.7	614.7	590.2	502.9	696.0	704.6	570.7	672.3	683.8	467.5	527.9	593.1
57.5	523.6	605.4	515.5	502.2	515.6	510.2	550.0	537.7	438.9	637.4	625.7	480.5	439.0	440.1	586.9	426.2
60.0	382.4	522.7	528.5	440.0	502.2	521.6	545.4	488.1	558.8	539.0	580.9	396.8	586.6	525.6	378.8	542.0
62.5	432.0	343.5	486.4	421.6	380.7	397.9	455.9	448.4	406.1	454.0	477.5	422.4	405.7	347.3	392.7	358.3
65.0	455.0	457.4	416.6	417.7	318.7	354.9	392.7	385.9	437.5	339.0	404.6	300.4	317.7	431.6	449.5	417.0
67.5	273.0	285.3	317.6	353.0	384.9	321.7	400.7	337.4	269.9	284.2	371.9	277.4	370.8	387.2	343.4	353.5
70.0	256.2	265.2	297.2	231.8	292.6	322.1	263.6	276.6	258.3	326.9	311.1	232.0	309.3	229.9	321.5	266.1
72.5	206.0	293.1	257.8	212.4	204.1	294.2	227.3	220.3	201.9	207.8	225.5	225.9	288.3	269.7	187.1	219.0
75.0	166.1	187.6	226.9	186.8	168.8	165.5	240.3	242.8	205.0	251.1	215.2	234.9	207.1	161.8	214.4	211.4
77.5	148.8	156.8	143.9	158.2	176.8	178.0	200.4	198.2	198.0	137.7	138.9	172.4	161.2	138.0	181.8	164.8
80.0	143.3	122.3	147.2	107.2	145.6	154.6	114.1	110.6	131.5	152.8	145.7	162.1	120.1	109.5	99.6	136.6
82.5	119.7	91.2	107.0	124.5	128.4	127.1	128.6	128.9	93.5	129.0	88.1	113.2	118.7	90.4	112.8	104.1
85.0	78.5	73.0	72.0	89.3	92.3	105.5	76.2	73.2	105.0	95.4	87.8	79.1	66.7	64.6	68.3	51.0
87.5	85.5	63.8	66.1	82.5	68.0	85.8	59.1	76.6	71.1	77.7	75.3	60.5	75.1	52.7	54.7	50.7
90.0	61.6	75.0	51.2	50.8	71.9	72.6	69.3	50.6	60.8	69.3	66.3	66.3	42.4	51.3	49.9	43.0
92.5	64.0	60.6	45.3	60.8	45.1	66.7	57.3	45.8	53.5	55.0	58.8	51.2	54.7	33.8	44.1	26.0
95.0	47.3	58.3	46.8	41.0	61.0	47.3	60.4	40.4	46.2	42.5	49.5	52.7	36.7	43.7	27.7	27.7
97.5	54.7	47.0	57.0	38.8	44.2	52.6	54.2	39.5	45.2	41.7	51.7	48.2	47.0	39.1	25.4	26.7
100.0	54.0	40.3	47.9	41.7	37.3	37.1	47.2	38.8	39.4	47.7	45.2	47.6	42.1	27.1	31.0	19.8
102.5	53.1	50.1	53.3	45.6	37.6	53.0	42.6	49.7	45.8	33.0	31.9	40.5	36.0	28.8	14.7	8.4
105.0	50.1	34.4	34.5	39.5	34.6	41.2	47.5	41.0	43.1	44.6	41.3	36.2	30.4	19.6	10.6	3.6
107.5	46.8	32.3	45.8	37.5	34.0	42.4	32.7	37.4	38.1	31.8	23.3	26.1	16.2	8.2	3.3	3.0
110.0	34.4	33.0	29.7	29.6	28.9	41.5	36.2	30.7	26.6	29.6	19.2	11.9	8.1	2.8	3.6	3.7
112.5	36.1	32.4	25.7	37.8	32.9	31.3	32.7	28.1	18.4	18.8	12.2	6.6	2.3	2.2	2.9	3.1
115.0	28.4	24.6	20.9	21.8	25.6	21.4	20.7	13.2	14.7	9.1	3.6	1.7	2.4	2.2	2.6	3.5
117.5	17.8	13.5	13.7	15.2	15.6	10.7	12.2	10.0	5.6	2.9	1.7	2.2	2.0	2.4	2.8	2.3
120.0	7.1	7.5	10.4	8.7	8.2	7.3	5.7	3.8	1.4	1.3	1.7	2.0	1.6	1.9	2.8	3.0
122.5	3.8	4.5	3.7	3.3	2.6	2.1	1.4	1.7	1.2	1.6	1.5	2.0	1.9	2.4	2.0	3.1
125.0	1.4	1.0	1.0	1.1	1.1	1.3	1.1	1.4	1.8	1.2	1.6	1.8	1.4	1.9	2.5	2.3
127.5	1.6	1.5	1.4	1.3	1.1	1.2	1.2	1.6	1.8	1.6	1.4	1.6	2.1	1.8	1.9	2.1
130.0	1.6	1.1	1.5	1.5	1.3	1.7	1.4	1.4	1.8	1.4	2.0	1.5	2.0	2.3	2.3	2.0
132.5	1.7	1.6	1.2	1.2	1.2	1.5	1.3	1.6	2.0	1.5	1.5	1.9	1.6	1.7	1.7	2.6





**דין וחשבון בדיקה מס' 9712310415**  
בהתאם לסעיף 12 לחוק התקנים תשי"ג 1953

Candela Table (cd)

	160.0	165.0	170.0	175.0	180.0	185.0	190.0	195.0	200.0	205.0	210.0	215.0	220.0	225.0	230.0	235.0
0.0	1182.8	1182.8	1182.8	1182.8	1182.8	1182.8	1182.8	1182.8	1182.8	1182.8	1182.8	1182.8	1182.8	1182.8	1182.8	1182.8
2.5	1177.4	1368.3	1362.0	992.3	973.3	1406.5	1380.7	1412.3	1391.6	1242.3	980.3	1418.2	965.3	1330.0	1196.2	1398.2
5.0	959.9	1326.9	1306.1	1270.1	1066.2	948.6	950.0	1145.6	1345.6	1320.3	1282.9	1276.0	1038.4	1249.8	1021.7	1057.7
7.5	1394.0	1013.6	1420.5	1438.2	1156.5	1377.8	1340.2	1211.4	1277.4	1408.8	1203.1	974.4	1007.5	1067.6	1418.2	1384.0
10.0	1066.4	1400.1	1284.7	1062.4	1014.5	947.6	1185.8	940.1	980.3	1027.4	1123.0	954.9	1068.5	1400.6	951.8	1366.9
12.5	1229.6	934.3	971.1	950.9	1191.3	1318.3	1311.4	933.6	1057.7	1182.9	1196.1	1083.3	1011.0	960.3	1141.6	1346.7
15.0	1105.6	1378.5	1036.5	986.4	1160.0	1220.5	1337.7	1137.4	1208.6	1073.0	1005.4	935.1	1341.0	1375.8	1189.2	1288.0
17.5	1153.1	1009.3	1312.1	965.1	927.9	1316.0	1041.6	1334.0	916.6	1076.9	1232.6	985.0	912.9	984.1	1016.2	1314.1
20.0	989.4	1144.7	902.6	1152.7	1332.6	968.6	898.1	1159.3	1348.2	1238.6	1219.2	928.8	1207.3	1062.2	886.9	1262.2
22.5	968.0	961.5	1164.7	1123.9	890.6	1117.6	910.1	1048.0	966.7	1022.2	1016.3	1236.8	979.2	1034.4	830.8	818.2
25.0	987.2	885.2	1137.3	1182.6	1212.0	1255.8	1004.0	892.5	1072.6	1268.0	1131.1	833.6	946.3	1148.1	1001.0	976.2
27.5	1188.0	924.1	1201.2	1112.1	999.0	1159.0	1254.6	1254.3	943.3	1186.6	808.1	1091.9	907.5	1106.5	759.6	744.2
30.0	1133.0	948.9	1020.0	1190.5	969.5	1060.8	929.0	836.5	996.5	999.2	1091.3	807.6	1078.1	1029.3	899.2	818.5
32.5	805.9	910.3	929.7	996.1	948.6	1045.6	1061.5	1074.0	1038.2	1095.9	734.2	989.8	1045.0	1044.2	1047.5	717.4
35.0	1127.5	1141.2	847.8	810.7	972.8	764.2	770.2	1077.7	757.5	719.1	813.9	982.5	955.0	909.8	743.9	842.8
37.5	830.8	1088.2	828.2	751.9	757.2	1080.9	1021.2	963.3	742.9	978.2	852.1	954.2	842.9	669.3	1004.2	767.2
40.0	690.0	1045.7	958.8	721.1	1052.0	732.8	915.6	862.0	730.6	835.0	658.4	779.3	743.4	775.9	852.5	664.0
42.5	860.5	744.4	686.5	707.0	685.2	988.6	732.3	939.7	736.9	735.8	721.3	612.4	645.0	791.1	905.0	804.7
45.0	876.7	764.3	741.7	661.6	931.5	629.7	723.4	881.7	805.3	581.2	595.4	578.7	745.3	763.1	773.6	769.4
47.5	793.6	700.7	758.9	587.3	606.6	611.7	711.5	796.3	518.5	550.5	547.9	710.8	604.0	742.7	692.7	624.0
50.0	560.3	772.7	792.9	800.8	630.4	542.4	608.0	496.2	650.6	494.3	496.1	536.7	672.4	527.9	685.9	711.5
52.5	457.3	666.4	593.7	539.9	721.3	664.6	646.6	607.0	524.4	448.8	533.9	580.0	478.8	479.9	560.8	693.9
55.0	449.1	591.7	481.0	557.2	651.6	673.5	534.8	409.7	557.7	418.7	482.1	548.3	472.3	435.6	467.1	496.2
57.5	486.5	557.3	404.4	410.4	586.2	542.9	566.8	495.6	383.1	563.1	572.0	586.3	454.6	460.4	535.8	532.3
60.0	396.3	480.4	372.5	542.9	531.9	477.6	331.6	411.3	339.6	341.1	389.6	442.5	430.8	359.9	453.6	413.7
62.5	378.6	446.4	385.1	479.7	373.1	349.1	414.5	357.9	329.0	427.1	457.1	424.9	348.0	408.8	288.1	415.8
65.0	306.0	265.4	299.2	329.5	289.7	336.0	258.5	342.2	342.3	333.9	321.7	378.1	262.6	300.5	362.7	364.1
67.5	363.4	266.3	230.1	295.5	229.2	266.6	313.1	270.5	244.9	339.3	247.6	307.4	233.6	316.4	219.4	316.3
70.0	265.1	283.1	225.2	203.4	271.1	204.3	203.3	191.7	208.0	220.6	212.5	249.8	234.1	194.5	268.4	198.8
72.5	192.7	161.0	163.5	160.0	160.4	193.7	156.4	149.0	208.2	173.2	195.3	211.8	233.6	248.0	216.8	202.2
75.0	176.6	184.8	171.8	144.7	114.9	156.8	160.6	128.0	123.0	163.0	191.8	178.9	150.9	133.6	181.1	175.6
77.5	139.2	122.6	126.9	125.1	124.7	90.7	126.4	111.4	134.4	113.2	151.9	158.7	129.7	148.4	158.8	110.7
80.0	106.4	89.3	71.0	83.7	85.4	62.0	77.3	86.2	106.8	112.2	105.6	83.3	120.7	115.3	120.8	106.2
82.5	85.8	70.8	73.4	64.8	54.4	39.7	43.4	68.6	75.8	78.5	66.0	83.0	71.4	92.8	100.7	101.9
85.0	46.2	53.1	40.9	30.0	34.2	24.6	39.6	38.0	48.4	44.4	60.5	74.8	54.6	78.0	83.1	75.8
87.5	35.5	34.8	19.1	22.5	19.0	12.8	17.0	29.9	36.3	47.4	46.7	39.9	47.1	65.7	47.1	53.5
90.0	32.8	22.9	11.3	7.4	8.4	10.4	16.4	15.9	31.3	26.1	30.1	41.5	42.7	52.7	59.3	41.3
92.5	26.1	14.2	11.1	6.6	11.3	6.9	10.3	18.2	23.4	34.8	36.3	44.7	32.9	46.3	40.9	41.8
95.0	17.5	13.3	7.1	7.5	9.8	8.0	7.3	12.6	21.9	25.9	36.6	37.9	30.8	47.0	40.2	39.1
97.5	15.8	10.5	5.9	10.2	13.1	9.1	7.6	7.6	16.8	28.6	26.7	27.2	40.3	38.0	33.6	37.4
100.0	9.1	4.5	6.5	9.7	10.7	8.0	6.4	4.5	11.6	17.7	29.3	26.2	31.3	42.1	33.6	46.8
102.5	4.7	5.7	6.4	7.1	9.1	6.6	7.1	4.0	5.1	8.3	22.6	22.0	34.6	28.1	34.8	33.9
105.0	4.4	4.1	7.0	8.1	9.5	5.5	7.5	4.7	4.0	3.7	11.6	23.2	21.5	26.3	34.1	36.3
107.5	3.8	5.6	4.9	6.0	7.9	5.6	7.0	3.7	4.5	2.9	5.1	8.1	21.8	21.7	34.2	25.8
110.0	4.0	5.5	6.3	5.8	5.5	4.4	6.3	4.8	3.2	3.0	3.1	5.0	9.5	13.5	17.8	28.9
112.5	2.9	4.7	5.4	5.1	4.9	3.8	3.6	5.1	3.0	3.5	2.7	2.1	4.1	6.8	16.1	17.5
115.0	2.8	4.4	4.7	4.2	4.6	3.4	4.0	4.3	3.0	2.8	2.2	2.9	2.5	2.7	5.3	10.2
117.5	3.5	3.4	4.3	3.5	3.8	5.0	3.5	4.3	3.0	3.3	2.5	2.3	2.6	2.0	2.7	4.6
120.0	2.7	2.7	4.0	3.7	3.6	3.6	3.4	4.2	4.0	2.8	2.6	1.9	2.5	2.1	2.2	1.9
122.5	3.5	2.8	3.5	2.8	4.6	4.4	3.1	3.8	3.1	3.7	3.1	2.0	2.1	2.4	2.2	2.0
125.0	2.1	3.0	2.5	3.1	2.9	2.6	2.7	3.4	3.1	2.1	2.4	2.2	2.2	1.9	1.6	1.9
127.5	1.9	2.5	2.6	2.5	2.5	3.1	2.2	3.1	2.1	2.2	2.4	2.7	1.9	1.9	1.7	1.7
130.0	2.0	2.0	2.1	2.0	2.9	2.4	2.2	2.8	3.1	3.0	2.5	2.6	2.8	2.1	1.8	2.0
132.5	2.1	1.9	2.4	2.1	2.6	3.1	2.4	2.7	2.4	3.2	3.1	2.1	2.6	1.9	2.1	2.4

עמוד 7 מתוך 13



**דין וחשבון בדיקה מס' 9712310415**  
בהתאם לסעיף 12 לחוק התקנים תשי"ג 1953

Candela Table (cd)

	240.0	245.0	250.0	255.0	260.0	265.0	270.0	275.0	280.0	285.0	290.0	295.0	300.0	305.0	310.0	315.0
0.0	1182.8	1182.8	1182.8	1182.8	1182.8	1182.8	1182.8	1182.8	1182.8	1182.8	1182.8	1182.8	1182.8	1182.8	1182.8	1182.8
2.5	1116.0	1181.7	1245.7	1415.8	1391.9	1067.6	1278.5	1166.5	1005.0	1084.2	1152.0	1160.7	1362.5	1258.3	977.5	956.2
5.0	1194.9	997.9	1264.1	988.3	1409.6	1022.0	1003.2	1296.9	1015.0	956.8	1178.4	1310.3	1160.2	1033.9	1418.3	1283.0
7.5	1311.0	1420.1	1198.9	1246.9	1253.0	971.6	1300.2	1274.8	955.1	1072.7	1408.9	1018.0	1000.4	949.5	962.7	1404.5
10.0	1204.0	1004.6	1249.2	1323.5	1229.7	1389.1	1021.6	967.2	1216.8	1272.5	962.0	1208.1	959.8	1281.3	1324.7	1328.6
12.5	1170.0	1392.3	1327.2	1386.2	995.4	1348.6	1290.0	985.5	1173.8	1396.2	1404.4	1350.3	1228.5	948.2	1329.0	1264.0
15.0	1184.8	1244.6	902.9	1246.9	1109.9	1218.2	1336.8	918.0	1343.0	904.3	1279.9	1270.0	1371.8	1318.2	1080.3	1311.7
17.5	901.0	867.3	997.4	1279.7	1178.8	887.4	1273.0	932.2	877.4	1210.3	1056.8	1307.0	882.4	1051.8	1085.5	1326.7
20.0	1115.0	1085.2	1137.1	855.8	989.2	1029.6	1118.6	862.6	1215.4	1074.8	924.4	839.5	1033.6	1180.4	982.3	1292.7
22.5	878.1	1144.8	1120.8	862.5	1010.0	811.5	1016.7	1123.3	816.4	1065.8	833.8	1145.7	1193.9	1070.9	848.3	996.8
25.0	945.9	1054.0	962.1	1048.4	871.8	855.9	771.5	826.0	1137.2	1091.2	1057.7	913.9	1135.3	1072.4	913.9	840.2
27.5	1106.6	864.7	904.6	960.3	879.0	752.6	1077.4	1110.6	1033.0	1029.9	999.4	759.1	1003.2	1116.8	821.4	895.8
30.0	777.1	1019.7	1020.0	876.1	1079.8	899.7	884.3	968.5	887.1	1106.1	977.4	965.9	1072.9	949.0	829.3	880.6
32.5	813.8	731.5	754.5	921.5	1068.8	1102.5	1106.6	1094.5	997.9	1001.0	736.9	785.7	748.8	886.1	818.0	864.6
35.0	917.1	1035.8	753.1	784.4	1067.5	764.9	767.8	768.0	1081.4	936.2	925.5	908.9	751.5	888.3	1021.8	685.0
37.5	960.4	826.5	1015.9	796.3	930.4	1001.7	1054.0	724.6	964.2	714.1	823.4	1018.3	716.2	916.0	754.8	803.4
40.0	893.3	733.2	812.9	718.0	785.2	675.7	976.1	717.2	772.0	945.8	986.2	1008.2	799.1	713.7	663.7	864.3
42.5	847.6	957.5	849.5	668.6	641.9	949.2	890.4	713.3	649.1	762.0	859.3	937.6	896.3	819.6	818.8	778.8
45.0	764.7	648.1	674.6	615.9	863.4	806.1	600.2	613.4	904.8	688.0	897.9	917.3	682.5	901.9	875.5	793.2
47.5	820.3	723.4	686.0	564.2	776.0	708.7	575.4	551.6	570.9	827.7	839.5	612.4	841.4	756.1	848.3	713.1
50.0	514.1	737.7	681.4	671.0	486.3	688.5	486.5	666.7	629.8	720.0	680.3	674.1	552.1	541.5	677.5	531.1
52.5	521.4	580.4	499.1	427.4	576.9	576.7	456.4	462.1	612.2	496.1	620.2	588.5	475.5	496.8	626.4	613.4
55.0	546.9	504.8	526.8	568.5	445.7	538.2	509.9	559.9	566.5	504.6	574.1	544.2	428.5	462.6	471.5	613.3
57.5	416.8	406.1	394.0	385.4	493.0	504.3	349.0	365.9	419.7	400.5	523.1	389.9	366.6	444.3	547.3	407.5
60.0	353.1	347.3	456.9	457.9	346.6	449.7	440.3	307.9	405.4	355.3	438.0	335.1	339.0	360.4	342.4	443.4
62.5	298.4	278.7	313.1	275.6	349.2	288.9	343.0	311.9	367.7	376.2	356.4	391.1	315.5	408.2	314.9	364.7
65.0	249.3	250.2	260.9	335.5	361.4	369.2	319.1	270.3	365.2	316.1	257.8	355.0	264.4	325.5	389.7	275.9
67.5	301.1	332.6	253.1	243.5	275.4	215.0	299.0	225.1	319.5	333.3	266.9	338.0	232.0	328.5	227.6	237.5
70.0	213.5	230.8	242.8	216.0	231.1	234.4	209.5	184.5	275.3	187.4	255.7	287.2	253.5	209.8	212.8	202.8
72.5	182.3	227.0	201.2	171.5	152.3	168.4	193.6	158.4	155.7	186.7	234.3	204.0	163.1	171.2	218.8	207.9
75.0	185.7	144.3	178.6	137.4	149.6	123.6	147.1	125.1	188.6	135.9	175.0	131.9	198.6	171.7	147.6	158.4
77.5	154.6	116.2	114.2	144.9	138.0	121.3	115.2	117.4	106.1	112.5	129.0	152.6	115.0	111.5	113.3	132.5
80.0	113.0	83.4	99.7	82.5	91.1	91.2	106.9	93.0	123.4	84.3	85.6	100.8	131.1	110.5	108.1	111.6
82.5	88.5	70.5	86.4	99.5	88.7	68.3	83.7	84.1	71.6	78.6	104.5	81.8	99.7	107.0	73.7	77.0
85.0	61.7	57.7	61.5	57.4	78.5	71.5	75.4	65.6	82.9	66.7	67.8	85.7	87.9	86.1	86.1	83.9
87.5	47.8	55.7	49.0	68.7	63.4	65.9	51.2	69.4	72.9	54.5	71.4	57.5	64.0	67.6	59.0	54.2
90.0	50.1	62.7	62.9	42.8	53.3	43.1	64.0	53.8	61.9	45.3	43.2	52.8	45.0	58.6	59.6	45.7
92.5	45.1	39.0	44.1	54.0	53.5	58.1	39.8	56.8	48.2	42.5	55.3	49.0	43.9	50.8	48.1	39.6
95.0	49.8	53.9	53.3	49.2	53.4	46.6	39.1	40.8	36.8	51.5	48.7	40.9	53.3	35.2	48.1	33.3
97.5	35.6	43.7	41.2	47.0	39.8	52.7	52.2	37.1	47.1	43.7	44.2	49.9	39.1	49.9	36.7	35.1
100.0	49.1	33.8	49.8	50.2	48.4	41.0	49.7	35.3	39.7	49.4	40.3	49.9	40.3	38.8	41.2	30.5
102.5	38.0	34.6	46.2	47.3	37.3	36.3	49.4	33.7	46.4	43.9	39.8	33.4	40.3	46.3	33.2	36.0
105.0	40.7	33.8	31.8	32.4	45.2	45.8	40.4	45.3	38.7	45.5	33.1	45.5	30.6	36.3	28.2	29.0
107.5	34.2	29.3	31.7	36.7	34.7	41.2	34.9	38.0	45.6	39.3	30.4	29.4	42.4	26.9	27.4	30.2
110.0	26.4	25.8	27.2	33.7	30.8	28.5	30.7	36.7	31.2	38.5	39.3	34.3	26.5	22.6	28.0	16.5
112.5	18.8	23.8	29.4	35.0	24.8	27.3	32.7	30.5	24.8	31.5	24.0	25.1	28.2	16.6	16.7	8.6
115.0	12.1	16.1	19.8	20.4	20.3	21.4	30.2	30.5	21.0	26.8	26.7	16.1	19.8	10.1	6.7	4.1
117.5	6.9	8.7	16.0	17.4	15.1	20.7	18.1	21.5	14.6	19.9	11.9	11.0	10.5	6.2	3.2	1.3
120.0	2.6	5.8	5.6	7.1	9.3	11.9	13.5	12.5	8.9	11.3	8.8	5.1	4.3	2.3	2.0	1.4
122.5	1.4	1.7	3.1	3.7	3.8	4.6	4.8	4.5	4.1	4.7	3.3	1.8	2.0	1.9	1.4	2.1
125.0	2.2	1.6	2.0	1.3	1.9	1.8	2.0	1.9	1.5	1.3	2.0	1.4	2.1	1.7	1.8	2.0
127.5	1.6	2.3	1.8	1.4	1.8	1.6	1.8	1.7	1.8	1.9	2.1	1.7	1.5	2.2	2.2	1.5
130.0	2.5	1.7	1.9	1.8	1.7	1.4	2.0	1.8	2.1	2.1	2.2	2.3	2.4	1.7	2.3	2.1
132.5	2.4	2.3	2.1	2.3	1.8	1.7	2.1	1.5	1.5	2.2	2.4	2.0	1.9	1.9	2.5	1.9

עמוד 8 מתוך 13





דין וחשבון בדיקה מס' 9712310415  
בהתאם לסעיף 12 לחוק התקנים תשי"ג 1953

Candela Table (cd)

0.0	1182.8	1182.8	1182.8	1182.8	1182.8	1182.8	1182.8	1182.8	1182.8
2.5	1054.7	1361.1	1157.3	970.9	1285.9	1311.9	1105.6	1306.5	977.1
5.0	947.9	1216.8	1281.5	1351.5	1119.5	1190.1	1250.9	1245.5	1444.2
7.5	1188.6	1210.9	949.1	1375.3	951.1	1166.3	980.3	1134.7	1444.8
10.0	944.7	1082.8	1405.7	1191.8	972.9	1064.9	1400.5	1068.1	1015.4
12.5	996.1	1244.5	1211.6	1175.2	970.0	1345.0	938.1	1112.9	1416.0
15.0	1174.3	962.0	990.6	1285.4	941.9	919.8	1282.0	1207.6	1216.8
17.5	1106.1	940.0	927.7	1092.6	1226.4	1343.6	1342.5	1223.2	1085.4
20.0	1048.5	1000.7	937.0	1356.3	1065.3	908.8	1174.1	1329.3	1244.6
22.5	1222.6	870.7	905.2	896.5	1152.8	897.5	1097.1	945.4	960.5
25.0	894.3	1111.4	862.4	939.0	1069.4	1059.7	1115.2	1258.2	906.5
27.5	782.4	1192.8	1226.4	1234.2	1172.9	968.4	1234.4	841.8	944.2
30.0	1055.0	1000.8	1014.5	812.0	902.0	912.3	1193.9	1111.1	1168.3
32.5	766.6	724.5	973.9	975.9	1014.4	931.3	799.4	883.0	997.6
35.0	862.2	1020.3	975.3	735.2	1119.6	854.9	898.0	799.0	867.1
37.5	950.9	671.7	931.1	700.0	878.9	766.5	946.8	737.6	806.2
40.0	885.5	914.7	877.4	755.7	711.3	996.6	708.4	697.0	1045.7
42.5	915.7	677.8	691.2	646.9	713.1	696.3	844.8	662.4	672.2
45.0	686.0	733.5	742.3	641.1	695.3	791.0	781.3	642.7	686.6
47.5	826.4	669.5	777.3	753.3	717.3	779.1	744.4	865.2	612.7
50.0	529.4	675.5	732.9	540.7	513.6	675.9	582.4	554.1	597.3
52.5	579.1	622.5	655.2	659.2	661.2	685.4	493.7	564.6	591.2
55.0	658.8	441.3	429.6	445.2	601.4	569.2	549.9	501.6	600.8
57.5	530.2	453.7	540.1	572.8	503.3	432.5	569.4	579.4	469.8
60.0	356.9	390.8	373.7	356.7	367.4	337.2	428.7	453.1	378.6
62.5	318.2	454.4	480.2	455.5	375.5	337.6	396.6	453.1	492.2
65.0	306.0	278.9	278.8	277.9	364.8	368.9	321.5	410.2	322.1
67.5	347.7	349.2	269.6	250.2	316.6	235.5	224.0	342.6	327.2
70.0	215.9	200.9	198.2	200.8	292.2	239.3	205.4	285.7	212.4
72.5	243.0	236.5	171.8	169.4	202.3	183.1	160.2	214.3	195.6
75.0	215.0	202.7	142.2	158.4	184.5	129.7	119.7	120.0	188.5
77.5	114.0	168.3	114.4	159.0	103.4	117.9	90.1	117.0	137.5
80.0	133.9	106.4	86.4	94.8	113.8	75.2	70.4	93.4	69.7
82.5	92.1	72.4	92.8	88.7	65.4	69.3	68.9	47.1	50.3
85.0	65.1	57.6	49.7	52.2	46.7	36.2	35.9	34.1	33.5
87.5	66.3	49.0	57.0	44.9	36.6	25.1	19.6	16.7	16.9
90.0	56.0	51.6	33.6	27.8	24.7	15.7	13.6	6.8	3.8
92.5	39.1	31.1	35.3	33.0	18.8	14.2	10.5	5.5	3.1
95.0	42.2	39.2	25.8	29.6	18.5	12.2	8.8	4.4	2.6
97.5	41.5	27.1	28.8	26.0	14.8	10.8	2.8	4.3	3.6
100.0	35.0	37.0	29.1	16.6	10.7	2.5	2.8	3.2	3.2
102.5	27.7	31.1	22.5	10.4	3.0	2.6	2.5	2.6	3.0
105.0	32.8	20.1	12.1	4.6	2.0	1.5	2.2	1.8	2.1
107.5	22.5	13.4	4.1	1.6	1.3	1.8	1.8	1.6	1.3
110.0	9.4	5.5	1.4	1.5	1.8	1.7	1.3	1.2	1.2
112.5	3.7	1.8	1.2	1.6	1.8	1.2	1.6	1.6	1.5
115.0	1.3	1.8	1.6	1.4	1.2	1.2	1.2	1.5	1.3
117.5	1.7	1.3	1.4	1.6	1.5	1.9	1.9	1.4	1.9
120.0	1.7	1.6	1.8	1.3	1.7	1.3	1.4	1.4	1.5
122.5	2.1	1.7	1.9	1.5	1.9	2.0	1.9	1.6	2.1
125.0	1.6	1.8	1.6	1.9	1.9	2.1	1.7	1.6	1.5
127.5	2.3	2.3	1.6	2.3	2.2	2.4	1.9	1.8	1.9
130.0	1.7	2.3	1.8	2.5	1.7	2.1	2.4	2.2	2.1
132.5	2.7	2.5	1.9	2.4	2.8	2.0	2.7	2.8	2.0

עמוד 9 מתוך 13



דין וחשבון בדיקה מס' 9712310415  
בהתאם לסעיף 12 לחוק התקנים תשי"ג 1953

Candela Table (cd)

	0.0	5.0	10.0	15.0	20.0	25.0	30.0	35.0	40.0	45.0	50.0	55.0	60.0	65.0	70.0	75.0
135.0	1.7	2.4	1.8	2.3	2.5	1.7	1.7	2.4	2.4	2.4	1.6	2.0	1.9	1.8	1.4	1.8
137.5	1.9	2.7	2.7	1.8	2.4	2.0	2.1	2.5	2.2	2.5	2.2	2.4	1.9	2.3	2.2	1.8
140.0	2.1	2.9	2.0	2.5	2.7	2.6	2.4	1.9	2.6	2.3	2.6	1.8	1.9	2.2	1.8	2.1
142.5	3.1	3.2	3.0	2.5	2.6	3.1	2.3	2.9	2.8	2.8	2.6	2.8	2.2	2.7	2.0	1.8
145.0	3.3	2.9	2.6	2.7	2.2	3.2	2.5	2.3	3.3	3.0	2.6	2.9	3.0	2.1	2.4	2.5
147.5	3.0	3.7	3.3	3.4	3.4	2.7	2.5	2.6	3.0	2.7	2.5	3.3	2.8	3.2	2.4	2.1
150.0	4.1	2.7	3.8	2.8	2.8	3.2	3.1	2.7	2.6	2.6	2.9	3.6	3.4	2.4	2.5	2.8
152.5	3.0	3.9	4.0	3.1	3.6	4.0	3.6	4.0	3.8	3.2	2.9	3.9	2.8	4.0	2.7	3.0
155.0	4.3	5.0	5.0	3.4	3.8	3.6	3.7	4.7	3.2	4.3	4.5	4.0	3.1	3.6	3.7	3.9
157.5	4.7	4.0	4.1	3.9	5.4	5.0	4.0	5.0	3.8	3.6	4.9	4.3	3.8	3.7	4.7	4.6
160.0	6.2	5.8	4.4	4.3	5.4	5.1	5.6	5.9	4.1	5.5	4.9	5.2	4.0	5.6	5.2	5.5
162.5	7.0	5.5	6.4	6.8	6.4	6.7	4.8	7.0	4.9	6.5	5.3	5.3	4.9	6.6	4.5	5.2
165.0	7.9	7.3	7.5	6.7	7.5	6.5	7.8	5.2	6.4	7.7	5.5	7.7	6.6	7.5	7.4	6.2
167.5	7.9	7.5	8.5	7.9	8.3	6.1	7.2	8.7	7.5	8.6	8.1	6.5	5.7	8.0	8.1	7.7
170.0	9.2	7.2	8.7	6.3	7.1	6.3	8.1	6.3	7.3	7.8	6.6	9.3	8.7	9.2	7.9	7.0
172.5	8.7	9.3	9.5	9.3	9.4	7.4	7.6	9.4	7.4	7.9	6.7	7.0	6.8	8.5	8.5	7.6
175.0	7.1	9.7	8.4	7.0	9.7	7.0	8.1	6.9	9.9	6.8	8.2	7.6	10.0	6.9	8.5	9.2
177.5	10.1	8.4	10.2	9.5	7.7	8.2	7.0	7.0	7.3	10.0	7.7	6.8	8.0	10.0	9.0	8.9
180.0	8.8	8.8	8.8	8.8	8.8	8.8	8.8	8.8	8.8	8.8	8.8	8.8	8.8	8.8	8.8	8.8

Candela Table (cd)

	80.0	85.0	90.0	95.0	100.0	105.0	110.0	115.0	120.0	125.0	130.0	135.0	140.0	145.0	150.0	155.0
135.0	1.7	1.8	1.6	1.5	1.4	1.9	2.1	1.5	2.0	1.5	2.3	1.9	1.7	1.9	2.6	1.9
137.5	1.7	2.0	1.3	1.3	1.6	1.9	1.5	2.0	1.8	1.7	1.9	1.9	2.1	1.8	1.9	2.6
140.0	1.8	2.0	2.0	2.1	1.8	2.3	1.9	2.1	2.3	1.9	2.7	2.3	2.1	2.4	2.0	2.4
142.5	1.7	2.2	1.9	1.9	1.7	2.3	2.6	1.8	1.9	2.0	2.6	2.8	2.5	2.2	2.1	2.6
145.0	2.5	2.1	2.1	2.3	2.1	2.6	2.7	2.7	3.1	2.5	3.0	2.9	2.6	2.9	2.3	2.8
147.5	2.8	2.8	2.8	2.2	2.3	2.9	3.1	2.5	2.3	3.5	3.1	2.5	2.6	3.7	3.0	3.7
150.0	3.1	2.6	2.6	3.1	2.7	3.2	3.2	2.5	3.0	2.6	3.8	3.4	3.8	3.3	3.6	4.1
152.5	2.9	2.7	3.1	3.5	3.7	3.8	3.7	2.7	3.9	4.1	4.1	3.1	3.0	4.0	5.0	3.5
155.0	4.2	3.6	3.0	3.4	2.9	3.1	3.2	3.7	3.6	3.7	4.7	3.7	3.6	4.5	3.5	4.0
157.5	4.7	3.2	3.9	4.6	3.8	4.8	4.7	4.8	4.5	5.0	5.2	3.8	3.6	3.7	4.6	4.2
160.0	5.4	5.4	4.6	4.2	4.1	3.8	3.8	3.8	5.0	4.6	4.4	5.1	4.6	5.8	6.1	6.1
162.5	5.5	4.3	6.2	6.2	4.5	5.7	5.4	6.4	5.8	5.0	6.7	4.9	4.9	6.8	5.8	5.3
165.0	7.0	5.0	5.8	5.4	5.0	7.3	7.4	5.1	7.0	5.4	5.8	7.0	5.8	7.6	5.2	7.6
167.5	7.5	5.8	7.0	8.0	5.9	8.0	5.6	5.7	7.3	5.6	5.7	5.6	6.4	7.5	6.1	5.9
170.0	7.1	7.0	6.0	6.6	7.6	7.1	7.9	8.9	6.1	6.6	6.5	9.0	7.7	6.9	6.4	8.9
172.5	8.9	6.3	6.9	7.2	9.2	6.4	8.4	8.2	8.1	9.1	8.1	6.7	6.9	9.3	6.5	6.5
175.0	9.1	9.4	6.5	9.6	6.5	6.9	9.7	8.3	7.9	6.7	9.0	9.4	9.3	9.9	6.7	6.9
177.5	6.6	6.7	6.7	9.5	9.1	8.0	9.4	6.6	7.0	6.8	9.9	8.5	7.0	9.5	7.6	7.3
180.0	8.8	8.8	8.8	8.8	8.8	8.8	8.8	8.8	8.8	8.8	8.8	8.8	8.8	8.8	8.8	8.8



דין וחשבון בדיקה מס' 9712310415  
בהתאם לסעיף 12 לחוק התקנים תשי"ג 1953

Candela Table (cd)

	160.0	165.0	170.0	175.0	180.0	185.0	190.0	195.0	200.0	205.0	210.0	215.0	220.0	225.0	230.0	235.0
135.0	2.5	2.6	2.0	2.8	3.0	2.6	3.2	3.2	2.4	3.3	2.8	2.9	2.4	2.9	2.4	2.9
137.5	2.6	2.4	3.0	2.0	2.8	2.5	3.5	3.2	2.4	2.6	2.8	3.2	3.2	3.0	2.7	2.1
140.0	2.1	2.1	2.9	2.7	2.5	2.8	2.5	2.9	2.4	2.7	2.9	2.6	3.1	3.2	2.3	3.1
142.5	2.7	2.3	2.4	2.1	2.7	2.6	3.8	3.6	2.8	2.5	2.6	3.5	3.6	3.4	3.6	2.4
145.0	3.4	2.4	2.8	2.6	2.9	3.6	2.8	3.4	3.7	4.1	4.4	3.1	3.5	3.5	2.6	3.5
147.5	3.0	3.8	3.5	2.5	3.4	3.1	4.5	3.9	3.9	3.3	4.3	3.5	3.6	3.0	3.8	3.7
150.0	4.1	3.1	4.3	2.8	3.7	4.9	3.9	3.4	4.7	5.1	3.6	4.4	4.1	4.7	3.6	3.6
152.5	4.6	4.2	4.3	3.5	4.3	3.6	5.0	3.7	4.1	3.7	5.2	4.8	3.7	3.5	3.6	4.4
155.0	4.1	5.2	3.5	4.1	4.0	4.7	4.0	5.0	5.3	5.5	5.0	5.2	4.9	3.8	3.7	3.7
157.5	5.4	3.8	4.0	3.9	5.4	5.3	4.2	5.2	4.2	4.4	5.2	5.8	5.5	4.7	4.6	5.0
160.0	5.7	5.3	5.2	4.7	5.3	5.2	4.7	5.7	6.1	4.6	6.0	4.7	4.4	6.2	6.0	6.3
162.5	6.5	4.7	6.0	5.8	5.3	6.4	7.4	5.0	7.3	6.2	5.7	7.3	7.2	6.0	6.4	5.0
165.0	7.5	5.4	5.2	5.2	7.9	8.2	7.8	7.1	7.1	7.9	5.4	5.4	5.4	5.9	6.5	7.9
167.5	7.8	5.8	5.9	8.2	7.7	8.7	6.8	6.1	8.2	8.8	8.6	8.0	8.7	6.3	5.9	6.2
170.0	6.4	6.2	6.8	7.3	9.2	9.1	9.3	8.7	8.5	8.9	6.3	7.0	8.7	7.3	9.3	6.4
172.5	9.6	7.9	8.5	9.3	9.8	7.1	6.6	9.2	9.8	6.6	9.5	7.4	9.8	9.4	7.3	8.9
175.0	6.7	6.7	9.9	9.0	10.2	10.1	9.6	9.4	9.0	8.5	7.3	7.9	8.7	8.0	8.3	9.6
177.5	9.9	6.8	9.8	8.5	10.4	7.0	7.3	9.9	8.0	8.8	8.7	7.3	9.3	7.9	9.8	9.4
180.0	8.8	8.8	8.8	8.8	8.8	8.8	8.8	8.8	8.8	8.8	8.8	8.8	8.8	8.8	8.8	8.8

Candela Table (cd)

	240.0	245.0	250.0	255.0	260.0	265.0	270.0	275.0	280.0	285.0	290.0	295.0	300.0	305.0	310.0	315.0
135.0	1.9	2.1	2.6	2.3	2.0	2.2	1.9	1.9	2.4	2.3	2.4	2.0	2.4	2.2	2.6	2.3
137.5	2.2	2.4	2.6	2.2	1.7	2.2	1.8	2.3	1.6	1.9	1.9	2.3	2.8	2.1	2.1	2.2
140.0	2.2	3.0	2.4	2.5	1.8	2.5	2.0	1.7	2.0	1.9	2.8	2.0	2.8	2.4	2.2	2.9
142.5	2.3	3.3	2.2	2.2	2.0	2.8	2.2	2.8	2.1	2.0	2.8	3.2	2.7	3.3	3.2	3.2
145.0	2.6	3.1	3.3	2.4	2.6	2.1	2.6	2.1	2.3	3.2	2.3	2.6	3.1	3.2	2.8	3.5
147.5	4.0	2.6	3.4	2.8	3.0	3.4	2.8	3.3	2.4	2.4	2.7	2.7	3.5	2.6	3.7	3.8
150.0	3.7	4.3	2.9	3.7	3.9	2.7	2.8	3.2	3.2	3.7	3.5	2.8	3.2	4.1	3.6	4.0
152.5	3.3	3.4	4.5	4.3	3.9	3.8	2.8	2.9	3.8	3.3	4.2	3.1	4.6	4.2	4.6	3.8
155.0	5.1	5.1	4.0	4.0	3.4	3.3	4.1	3.1	3.7	3.7	4.8	3.6	3.6	3.4	4.2	3.5
157.5	5.5	3.9	4.0	4.2	5.2	4.8	3.8	3.5	5.1	4.6	4.4	4.8	4.5	5.1	4.7	4.4
160.0	4.2	5.6	4.8	4.6	5.5	4.6	4.1	5.6	4.6	5.5	5.8	4.2	5.7	5.6	5.8	6.2
162.5	5.3	6.9	6.4	6.0	4.6	4.9	4.5	6.3	6.8	6.8	6.9	6.9	5.6	4.8	5.7	5.2
165.0	7.5	7.7	6.7	5.2	6.4	7.2	5.0	6.1	5.6	5.9	5.2	5.3	6.2	5.5	6.8	7.3
167.5	7.9	7.5	7.0	8.4	5.7	8.1	8.2	6.7	6.9	5.7	8.5	8.3	5.8	5.9	7.1	6.4
170.0	7.0	7.5	7.0	7.3	7.5	8.9	6.9	7.6	6.1	6.7	6.3	6.4	6.2	6.2	8.2	8.2
172.5	7.0	8.3	9.2	6.9	8.1	7.2	8.5	8.6	8.2	9.3	9.5	6.9	7.0	6.6	8.4	8.1
175.0	7.7	9.2	7.6	8.6	8.9	7.7	9.2	8.3	9.6	8.4	6.5	8.5	7.6	8.7	9.9	7.7
177.5	7.0	9.3	8.7	9.5	9.7	8.0	8.1	7.3	9.8	7.5	7.5	6.7	6.7	6.9	6.7	10.0
180.0	8.8	8.8	8.8	8.8	8.8	8.8	8.8	8.8	8.8	8.8	8.8	8.8	8.8	8.8	8.8	8.8





דין וחשבון בדיקה מס' 9712310415  
בהתאם לסעיף 12 לחוק התקנים תשי"ג 1953

Candela Table (cd)

	320.0	325.0	330.0	335.0	340.0	345.0	350.0	355.0	360.0
135.0	2.2	2.9	2.3	2.6	2.9	2.4	3.0	2.0	1.7
137.5	2.4	3.0	2.7	2.1	2.1	2.9	2.5	2.8	1.9
140.0	2.7	3.0	2.9	3.2	3.0	3.3	3.0	2.2	2.1
142.5	2.9	2.7	2.7	2.4	3.0	3.4	2.4	3.4	3.1
145.0	2.6	2.7	3.0	3.8	3.4	2.8	3.8	3.1	3.3
147.5	2.7	2.8	4.0	3.7	3.2	3.9	2.9	3.1	3.0
150.0	3.2	4.4	4.1	4.3	4.4	3.1	3.6	3.2	4.1
152.5	4.8	4.4	3.3	4.3	4.9	5.0	4.4	4.0	3.0
155.0	3.5	3.6	3.6	3.6	4.5	5.3	5.0	3.9	4.3
157.5	5.3	5.5	4.6	4.1	4.5	5.7	5.7	4.0	4.7
160.0	5.2	4.6	4.7	4.4	4.7	5.6	5.5	5.7	6.2
162.5	4.9	4.9	5.7	6.2	7.3	6.6	5.8	5.8	7.0
165.0	6.0	5.4	6.4	7.2	7.8	7.6	5.5	7.7	7.9
167.5	7.0	6.0	6.4	8.5	6.2	8.8	8.7	5.9	7.9
170.0	7.1	7.4	8.2	7.1	6.7	9.3	6.4	9.3	9.2
172.5	6.6	8.0	7.5	9.0	9.2	6.8	9.7	6.6	8.7
175.0	7.0	8.9	8.3	7.7	10.0	9.9	6.8	9.5	7.1
177.5	8.3	8.8	7.1	9.3	10.1	6.8	9.0	10.1	10.1
180.0	8.8	8.8	8.8	8.8	8.8	8.8	8.8	8.8	8.8

עמוד 12 מתוך 13



דין וחשבון בדיקה מס' 9712310415  
בהתאם לסעיף 12 לחוק התקנים תשי"ג 1953

4. ציוד המדידה:

המדידות נעשו בעזרת :

הערות	דגם	יצרן	ציוד מדידה
	T High Speed 6400 Moving Mirror Goniophotometer	Labsphere	גוניופוטומטר
	WWT210	YOKOGAWA	מד הספק
	CW 1251	ELGAR	ספק כח
	DPI-8-C24	OMEGA	מד טמפרטורה
	8808A	FLUKE	מולטימטר
	XHR150-7	Sorensen	ספק כח
	0002866	UL Newton	Photocell Amplifier

עמוד 13 מתוך 13